

BOBBI BROWN

Brightening Blush Collection

Sweep. Swirl. Glow.

Limited-Edition Brightening Blush Collection

Play up your glow. Create our ultimate spring look with made-to-play, multidimensional Brightening Blush and artist-approved Luxe Lipstick pairings. Catch the light with our Limited-Edition Brightening Blush. 3-in-1 shades of multidimensional color brighten cheeks and enhance skin with a rosy flush for an instant lit-from-within look. Sweep for sheer, swirl for bold, and play it up with Luxe Lipstick, which infuses rich color with skincare ingredients and 10-hour wear. With these luxurious essentials, a fresh glow is on the horizon. **SRP:** Brightening Blush €49 | Luxe Lipstick €35

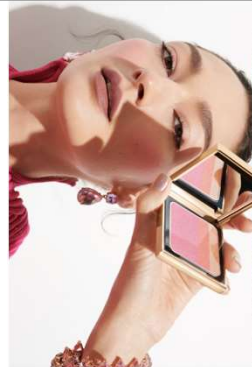


Why We Love It:

- ✓ *Customizable Glow:* Shimmering shades instantly brighten, while white pearlescent powders enhance skin with semi-transparent luminosity.
- ✓ *Versatile:* The versatile shade range is designed to flatter all skin tones, and the buildable shades can be used together or on their own.
- ✓ *Luxurious Application:* Soft texture glides on smoothly and blends seamlessly for a wash of natural-looking color and illuminated complexion.

How To Use:

1. *Create a natural flush:* Swirl all 3 shades together and sweep onto cheeks, from apple to temple.
2. *Add more definition:* Apply deepest shade to cheeks and lighter shades on the high points of the face to brighten.
3. *Complete the look:* Play up your glow with a swipe of Luxe Lipstick in a complementary shade.



Our ultimate glow-getter comes in 5 shades, with an artist-curated Luxe Lipstick to go with it:

- ✓ Blushed Coral + Retro Coral Luxe Lipstick
- ✓ Blushed Peach + Afternoon Tea Luxe Lipstick
- ✓ Blushed Pink + Neutral Rose Luxe Lipstick
- ✓ Blushed Bronze + Italian Rose Luxe Lipstick
- ✓ Blushed Burgundy + Cranberry Luxe Lipstick



Available: February 2023 at Bobbi Brown Cosmetics Counters and at www.bobbibrown.nl
For more information, please contact wadie@mmbusy.com - +31682690816
Find us on social: @BobbiBrown #BobbiBrown